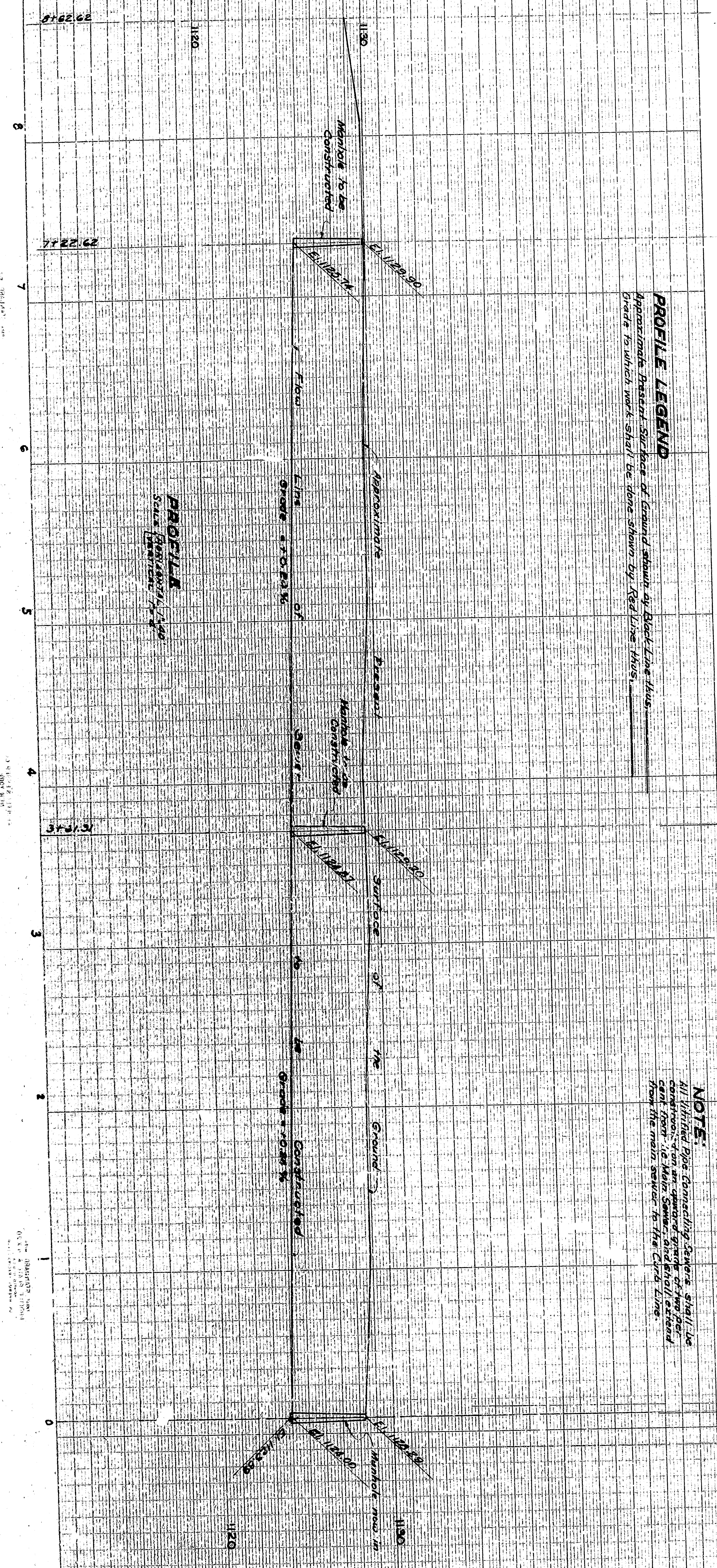


PLAN
SCALE 1"=40'



PROFILE
SCALE 1"=40'

PROFILE LEGEND
Approximate finished surface of ground shown in black line thru
grades to which work shall be done shown by red lines thru
grades to which work shall be done shown by red lines thru

NOTE:
All vitrified pipe connecting to the main sewer shall be
from the main sewer to the curb line.

LEGEND
 1. 6" Vitrified Sewer Pipe
 2. 12" Vitrified Sewer Pipe
 3. 18" Vitrified Sewer Pipe
 4. 24" Vitrified Sewer Pipe
 5. 30" Vitrified Sewer Pipe
 6. 36" Vitrified Sewer Pipe
 7. 42" Vitrified Sewer Pipe
 8. 48" Vitrified Sewer Pipe
 9. 54" Vitrified Sewer Pipe
 10. 60" Vitrified Sewer Pipe
 11. 66" Vitrified Sewer Pipe
 12. 72" Vitrified Sewer Pipe
 13. 78" Vitrified Sewer Pipe
 14. 84" Vitrified Sewer Pipe
 15. 90" Vitrified Sewer Pipe
 16. 96" Vitrified Sewer Pipe
 17. 102" Vitrified Sewer Pipe
 18. 108" Vitrified Sewer Pipe
 19. 114" Vitrified Sewer Pipe
 20. 120" Vitrified Sewer Pipe

SEWER DESIGN
 1. All vitrified pipe shall be laid on a concrete bed.
 2. The pipe shall be laid on a bed of concrete or brickwork.
 3. The pipe shall be laid on a bed of concrete or brickwork.

TITLE & TO STREET
 SIXTEENTH STREET, SAN BERNARDINO COUNTY, CALIFORNIA
 BETWEEN KENWOOD AVENUE AND WATERMAN AVENUE

SCALE
 PLAN SCALE 1"=40'
 PROFILE SCALE 1"=40'

DATE
 JULY 1948

ENGINEER
 R.D. FORSYTHE
 ACTING CITY ENGINEER

APPROVED
 JULY 28, 1948

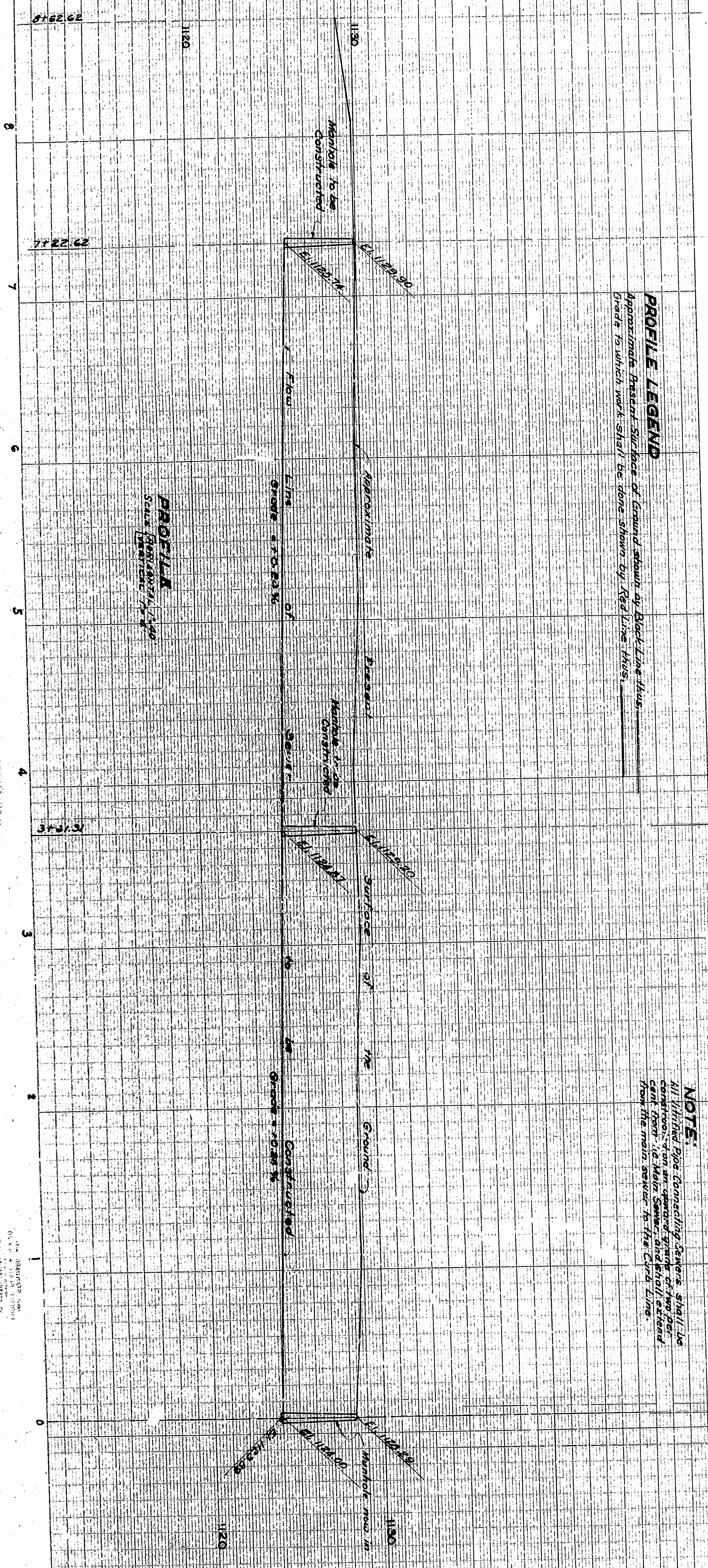
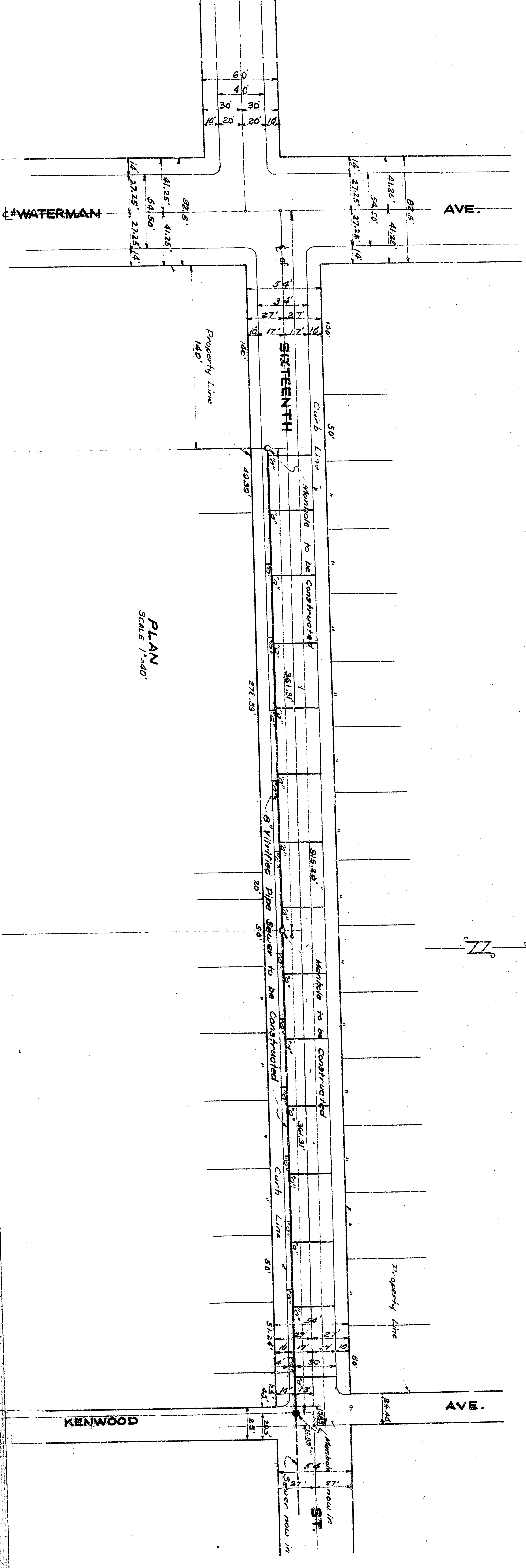
FILED
 SAN BERNARDINO COUNTY
 ENGINEERING DEPARTMENT
 JULY 28, 1948
 PLAN NO. 1780

SIXTEENTH STREET SEWER
 BETWEEN
 KENWOOD AVENUE AND WATERMAN AVENUE
 CITY OF SAN BERNARDINO
 CALIFORNIA

SHEET NO. 1
 PLAN NO. 1780
 JULY 1948
 R.D. FORSYTHE
 ACTING CITY ENGINEER
 PLAN ADOPTED July 28, 1948

1560
 24

1513 ST. (SEWER) KENWOOD AVE. TO WATERMAN AVE.



PROFILE LEGEND
Approximate finished surface of ground shown in Black-Line this
Grade to which work shall be done shown by Red-Line this.

NOTE:
All vitrified pipe connecting to the main sewer shall be
cast iron, 18" diam. sewer, and shall extend
from the main sewer to the curb line.

LEGEND

- 8" Vitrified Sewer Line
- 18" Cast Iron Sewer
- Manhole
- Proposed
- Existing
- Ground Surface
- Proposed Sewer Line
- Existing Sewer Line
- Proposed Manhole
- Existing Manhole
- Proposed Sewer Line
- Existing Sewer Line
- Proposed Manhole
- Existing Manhole

TITLE & TO STREET
PUBLIC STREET, SIXTEENTH STREET
BETWEEN WATERMAN AVENUE AND KENWOOD AVENUE
CITY OF SAN BERNARDINO
CALIFORNIA

GENERAL NOTES
1. The sewer line shall be constructed in accordance with the
specifications of the City of San Bernardino.
2. The sewer line shall be constructed in accordance with the
specifications of the City of San Bernardino.

SIXTEENTH STREET SEWER
KENWOOD AVENUE AND WATERMAN AVENUE
BETWEEN
CITY OF SAN BERNARDINO
CALIFORNIA

JULY 1948

R.D. FORSYTHE
ACTING CITY ENGINEER

PLAN ADOPTED July 28, 1948

FILED
City of San Bernardino
City Engineer's Office

SHEET NO. 1
PLAN NO. 1780

30 REVISIONS TO BE MADE BY THE ENGINEER

16 1/2 ST. (SEWER) KENWOOD AVE. TO WATERMAN AVE.

1550